



US008383453B2

(12) **United States Patent**
Kim

(10) **Patent No.:** **US 8,383,453 B2**
(45) **Date of Patent:** **Feb. 26, 2013**

(54) **METHOD OF MANUFACTURING ORGANIC LIGHT EMITTING DISPLAY APPARATUS AND ORGANIC LIGHT EMITTING DISPLAY APPARATUS**

(75) Inventor: **Won-Yong Kim**, Yongin (KR)

(73) Assignee: **Samsung Display Co., Ltd.**, Yongin, Gyeonggi-Do (KR)

(*) Notice: Subject to any disclaimer, the term of this patent is extended or adjusted under 35 U.S.C. 154(b) by 254 days.

(21) Appl. No.: **12/926,586**

(22) Filed: **Nov. 29, 2010**

(65) **Prior Publication Data**

US 2011/0127502 A1 Jun. 2, 2011

(30) **Foreign Application Priority Data**

Nov. 30, 2009 (KR) 10-2009-0117087

(51) **Int. Cl.**
H01L 51/40 (2006.01)

(52) **U.S. Cl.** **438/99; 438/82; 430/127; 430/132; 257/40; 257/E51.001**

(58) **Field of Classification Search** 438/99, 438/82; 430/127, 132; 257/E51.001, 40
See application file for complete search history.

(56) **References Cited**

U.S. PATENT DOCUMENTS

6,878,470	B2 *	4/2005	Kawamura et al.	428/690
7,244,669	B2 *	7/2007	Sirringhaus et al.	438/535
7,629,102	B2 *	12/2009	Ochi et al.	430/127
7,662,314	B2 *	2/2010	Han et al.	252/500

7,732,249	B2 *	6/2010	Mizuno et al.	438/99
7,833,569	B2 *	11/2010	Chae et al.	427/66
2003/0143339	A1	7/2003	Kobayashi	
2003/0230967	A1	12/2003	Kawamura et al.	
2004/0266207	A1 *	12/2004	Sirringhaus et al.	438/725
2006/0175964	A1 *	8/2006	Han et al.	313/506
2006/0223221	A1	10/2006	Ishii	
2006/0249732	A1 *	11/2006	Shirasaki et al.	257/59
2007/0071885	A1	3/2007	Kumagai	
2007/0243651	A1 *	10/2007	Mizuno et al.	438/38
2008/0150418	A1 *	6/2008	Chae et al.	313/504
2009/0023091	A1 *	1/2009	Ochi et al.	430/133

FOREIGN PATENT DOCUMENTS

JP	2003-323983	A	11/2003
JP	2004-095850	A	3/2004
JP	2007-044582	A	2/2007
KR	10 2003-0055121	A	7/2003
KR	10 2005-0080462	A	8/2005
KR	10 2006-0105495	A	10/2006
KR	10 2007-0036700	A	4/2007
KR	10 2008-0057412	A	6/2008

* cited by examiner

Primary Examiner — Telly Green

(74) *Attorney, Agent, or Firm* — Lee & Morse, P.C.

(57) **ABSTRACT**

A method of manufacturing an organic light emitting display apparatus includes forming first electrodes on a substrate, forming a pixel defining layer (PDL) on the substrate and first electrodes, the PDL including openings exposing predetermined areas of the first electrodes, forming a charge transport layer on the PDL and inside the openings of the PDL, performing a hydrophobic process on the charge transport layer, performing a hydrophilic process on the charge transport layer, such that portions of the charge transport layer corresponding to the openings are made hydrophilic, forming organic light emitting layers on the charge transport layer, and forming a second electrode electrically connected to the organic light emitting layers.

16 Claims, 6 Drawing Sheets

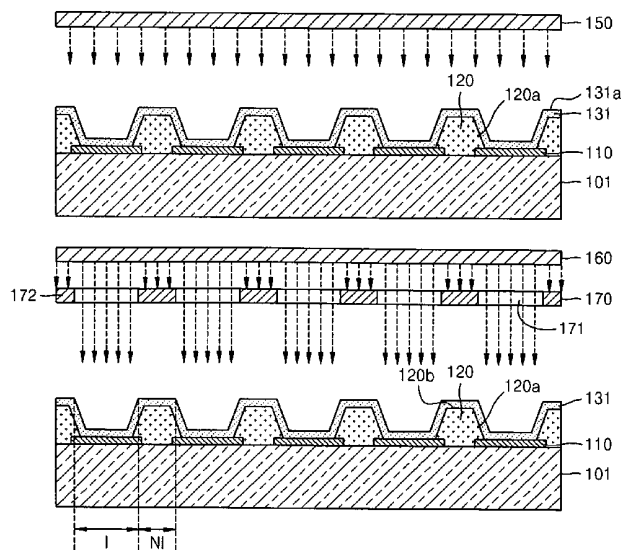


FIG. 1A

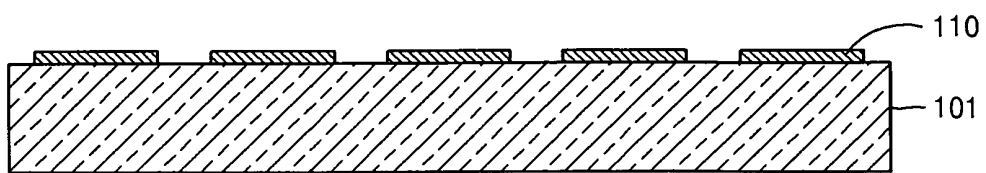


FIG. 1B

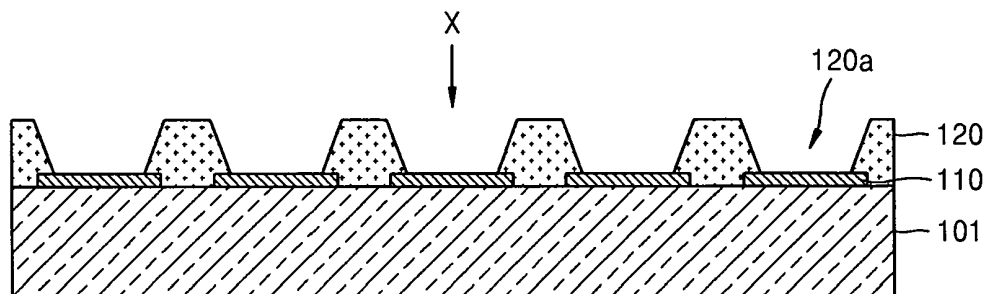


FIG. 1C

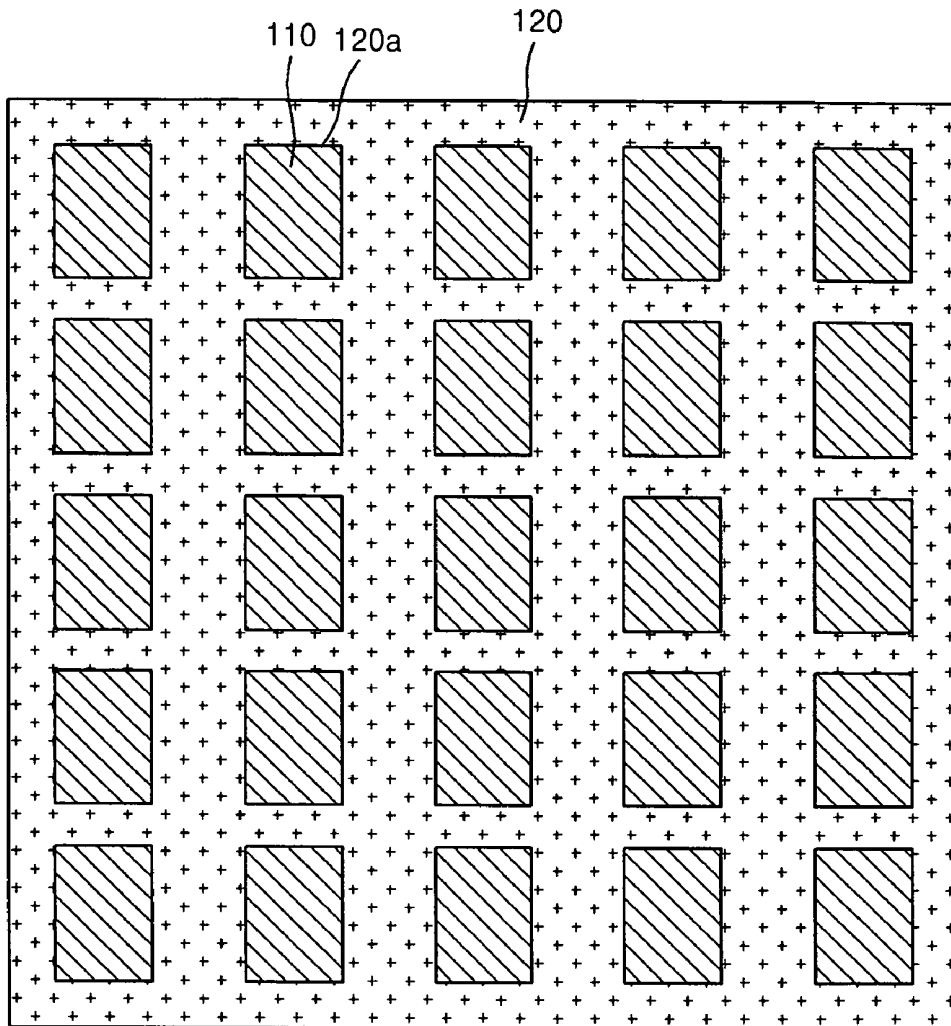


FIG. 1D

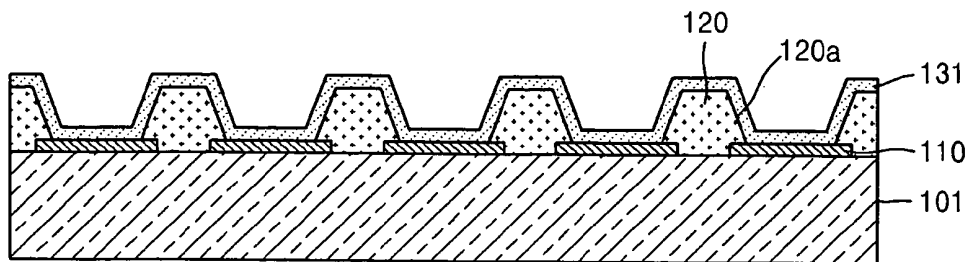


FIG. 1E

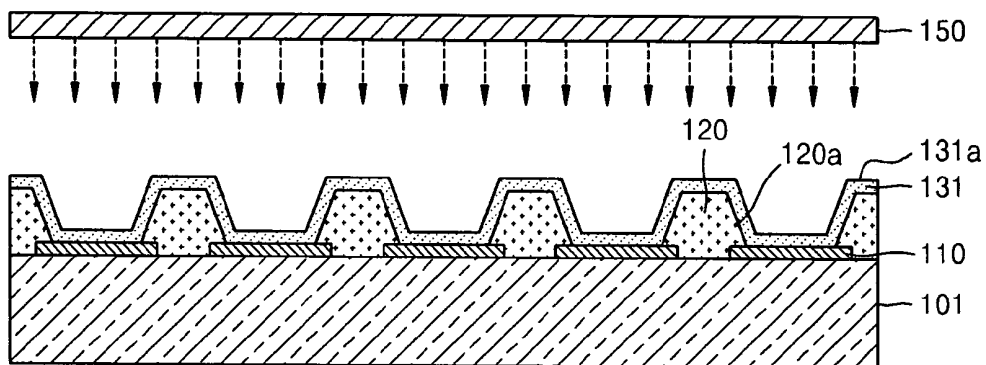


FIG. 1F

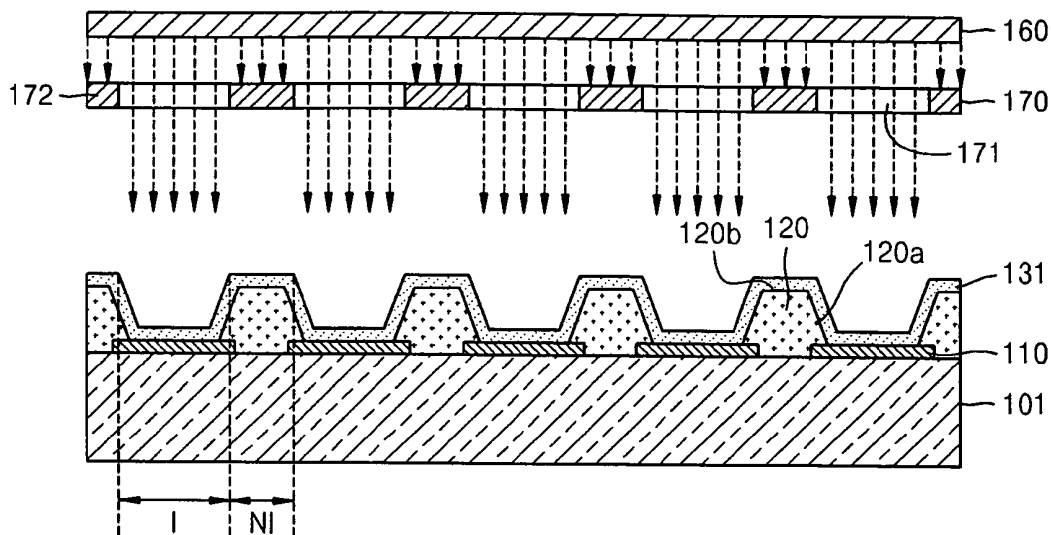


FIG. 1G

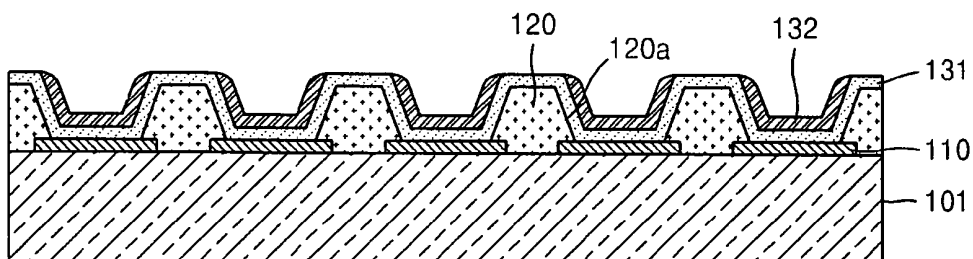


FIG. 1H

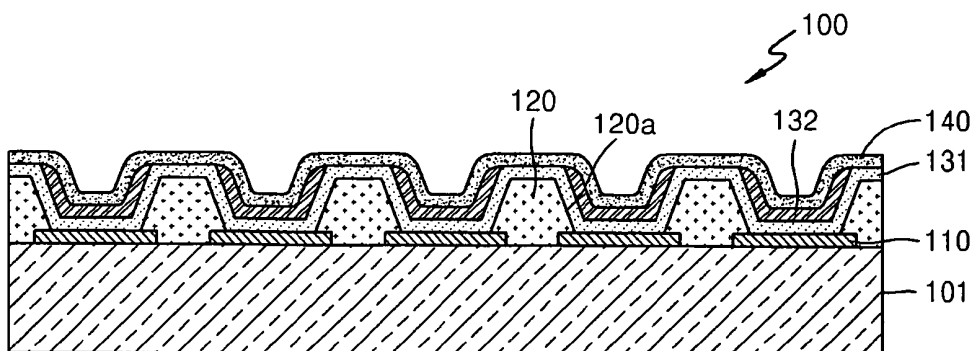


FIG. 2A

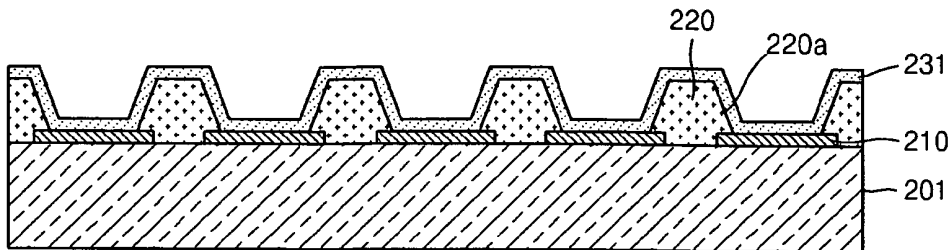


FIG. 2B

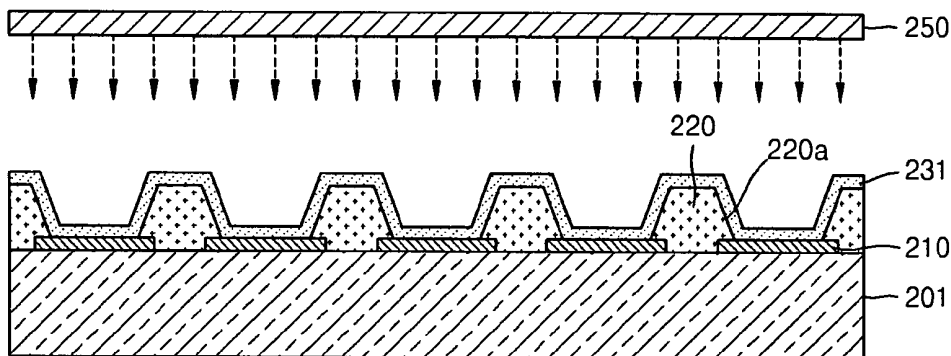


FIG. 2C

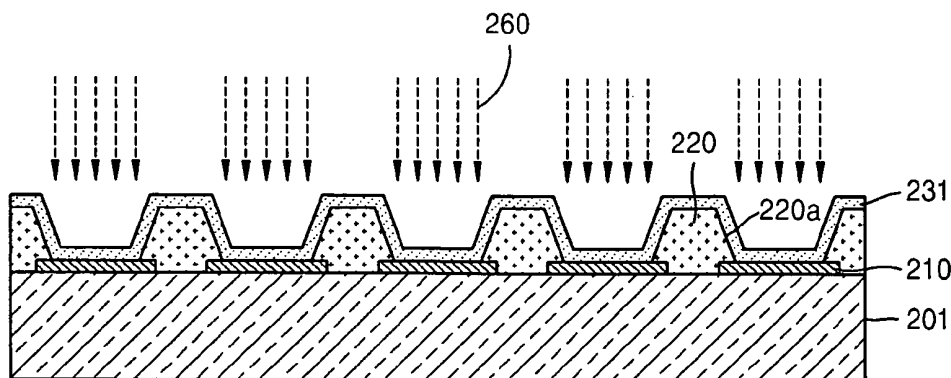


FIG. 2D

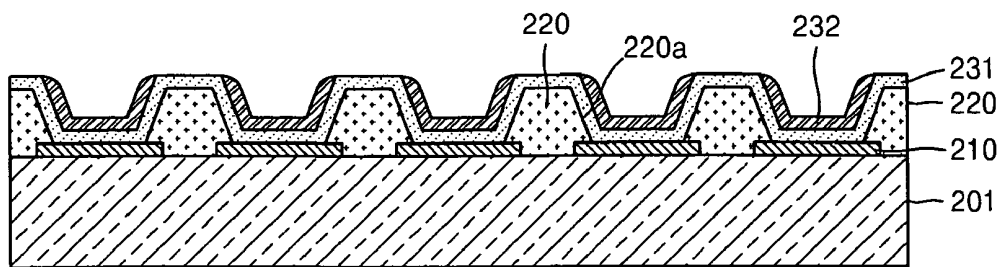
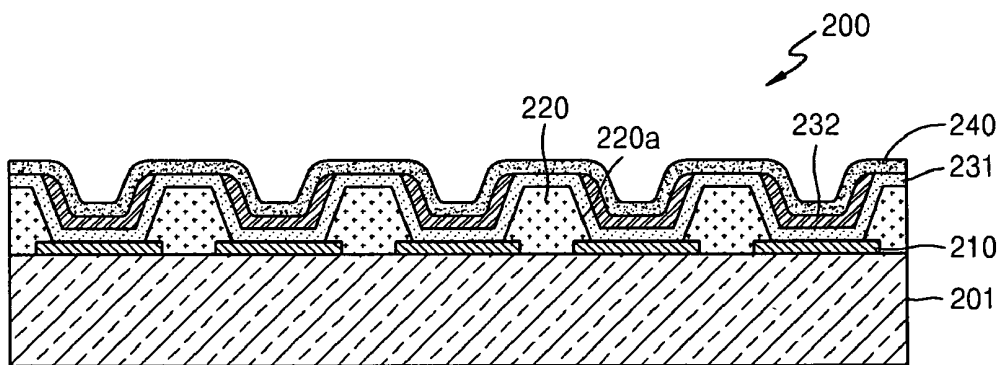


FIG. 2E



**METHOD OF MANUFACTURING ORGANIC
LIGHT EMITTING DISPLAY APPARATUS
AND ORGANIC LIGHT EMITTING DISPLAY
APPARATUS**

BACKGROUND

1. Field

Example embodiments relate to a method of manufacturing an organic light emitting display apparatus and an organic light emitting display apparatus. More particularly, example embodiments relate to a method of manufacturing an organic light emitting display apparatus by which organic light emitting layers are easily formed.

2. Description of the Related Art

A display apparatus has been replaced with a portable thin film type flat panel display (FPD) apparatus. Among FPD apparatuses, an electroluminescent display apparatus is a self-luminous display apparatus which has a wide viewing angle, a high-quality contrast, and a fast response time. Thus, the electroluminescent display apparatus attracts attention as a next generation display apparatus.

The electroluminescent display apparatus, e.g., an organic light emitting display apparatus, may include light emitting layers, e.g., formed of an organic material, having high-quality luminance, driving voltage, and response time. In addition, the organic light emitting display apparatus may exhibit polychromatic characteristics, as compared with an inorganic light emitting display apparatus.

A conventional organic light emitting display apparatus may include a cathode electrode, an anode electrode, and organic light emitting layers. When voltage is applied to the cathode and anode electrodes, the organic light emitting layers emit visible rays.

The organic light emitting display apparatus may include sub-pixels for realizing red (R), green (G), and blue (B) visible rays in order to realize a natural color screen. Organic light emitting layers are formed in R sub-pixels to emit the R visible rays, in G sub-pixels to emit the G visible rays, and in B sub-pixels to emit the B visible rays.

SUMMARY

Embodiments are directed to a method of manufacturing an organic light emitting display apparatus and an organic light emitting display apparatus, which substantially overcome one or more of the problems due to the limitations and disadvantages of the related art.

It is therefore a feature of an embodiment to provide an organic light emitting display apparatus and a method of manufacturing the same by simplifying the formation process of the organic light emitting layers therein.

At least one of the above and other features and advantages may be realized by providing a method of manufacturing an organic light emitting display apparatus, including forming a pixel defining layer (PDL) on the substrate and first electrodes, the PDL including openings exposing predetermined areas of the first electrodes, forming a charge transport layer on the PDL and inside the openings of the PDL, performing a hydrophobic process on the charge transport layer, performing a hydrophilic process on the charge transport layer, such that portions of the charge transport layer corresponding to the openings are made hydrophilic, forming organic light emitting layers on the charge transport layer, and forming a second electrode electrically connected to the organic light emitting layers.

The organic light emitting layers may be formed on the charge transport layer to respectively correspond to the openings. The charge transport layer may include a hole transfer layer (HTL) and/or a hole injection layer (HIL). The hydrophobic process for the surface of the charge transport layer may be performed under atmosphere of a fluoride compound gas using plasma or ultraviolet rays. The fluoride compound gas may include CF_4 .

Performing the hydrophilic process may include irradiating ultraviolet light onto regions of the charge transport layer corresponding to the openings. The hydrophilic process may include providing a mask including transmissive areas respectively corresponding to the openings, and radiating energy onto the mask using an ultraviolet lamp. The hydrophilic process may include radiating energy onto the areas of the surface of the charge transport layer corresponding to the openings using an ultraviolet laser. The hydrophilic process may be performed by scanning ultraviolet laser beams focused to sizes corresponding to the openings. The hydrophilic process may include making the exposed areas of the surface of the charge transport layer corresponding to bottom and inside surfaces of the openings hydrophilic. The hydrophilic process may be performed in an ambience of air or a nitrogen gas.

Performing the hydrophilic process may include making an upper surface of the charge transport layer hydrophilic only inside the openings of the PDL. After the hydrophilic process, a hydrophobic portion of the charge transport layer may be defined on an upper surface of the PDL around the openings. A portion of a hydrophilic charge transport layer inside each opening may be completely surrounded by a portion of a hydrophobic charge transport layer. The hydrophobic process may be performed before the hydrophilic process. The hydrophobic process may be performed on an entire upper surface of the charge transport layer, and the hydrophilic process may be performed only on portions of the charge transport layer corresponding to the openings. The organic light emitting layers may be formed using a nozzle printing method. An organic light emitting display apparatus may be manufactured by the above method.

BRIEF DESCRIPTION OF THE DRAWINGS

The above and other features and advantages will become more apparent to those of ordinary skill in the art by describing in detail exemplary embodiments with reference to the attached drawings, in which:

FIGS. 1A, 1B, and 1D-1H illustrate cross-sectional views of stages in a method of manufacturing an organic light emitting display apparatus according to an embodiment;

FIG. 1C illustrates a top view of FIG. 1B; and

FIGS. 2A through 2E illustrate cross-sectional views of stages in a method of manufacturing an organic light emitting display apparatus according to another embodiment.

DETAILED DESCRIPTION

Korean Patent Application No. 10-2009-0117087, filed on Nov. 30, 2009, in the Korean Intellectual Property Office, and entitled: "Method of Manufacturing Organic Light Emitting Display Apparatus and Organic Light Emitting Display Apparatus," is incorporated by reference herein in its entirety.

Example embodiments will now be described more fully hereinafter with reference to the accompanying drawings; however, they may be embodied in different forms and should not be construed as limited to the embodiments set forth herein. Rather, these embodiments are provided so that this

disclosure will be thorough and complete, and will fully convey the scope of the invention to those skilled in the art.

In the drawing figures, the dimensions of layers and regions may be exaggerated for clarity of illustration. It will also be understood that when a layer or element is referred to as being "on" another layer or substrate, it can be directly on the other layer or substrate, or intervening layers may also be present. In addition, it will also be understood that when a layer is referred to as being "between" two layers, it can be the only layer between the two layers, or one or more intervening layers may also be present. Like reference numerals refer to like elements throughout.

A structure and an operation of example embodiments will now be described in detail with reference to FIGS. 1A-1H. FIGS. 1A through 1H illustrate views of stages in a method of manufacturing an organic light emitting display apparatus according to an embodiment.

Referring to FIG. 1A, first electrodes **110** may be formed on a substrate **101**. Before the first electrodes **110** are formed, a thin film transistor (not shown) may be formed on the substrate **101**. It is noted that the method according to the example embodiment may be applied to a method of manufacturing an active matrix (AM) organic light emitting display and/or a method of manufacturing a passive matrix (PM) organic light emitting display apparatus.

The substrate **101** may be formed of a transparent glass material, e.g., including SiO₂ as a main ingredient. The substrate **101**, however, is not limited thereto, e.g., it may be formed of a transparent plastic material or of metal. An example of a transparent plastic material may include an insulating organic material, e.g., one or more of polyethersulphone (PES), polyacrylate (PAR), polyetherimide (PEI), polyethylene-naphthalate (PEN), polyethylene-terephthalate (PET), polyphenylene sulfide (PPS), polyallylate, polyimide, polycarbonate (PC), cellulose triacetate (TAC), and cellulose acetate propionate (CAP). Examples of metals may include one or more of iron (Fe), chromium (Cr), manganese (Mn), nickel (Ni), titanium (Ti), molybdenum (Mo), stainless steel (SUS), an invar alloy, an Inconel® alloy, a Kovar Alloy®, etc. The substrate **101** may be formed in a foil form.

A buffer layer (not shown) may be formed on the substrate **101** in order to smooth an upper surface of the substrate **101** and to prevent a permeation of impure elements into the substrate **101**. The buffer layer may be formed of, e.g., SiO₂ and/or SiN_x, or the like.

The first electrodes **110** may be formed on the substrate **101**. The first electrodes **110** may be formed in predetermined patterns, e.g., using photolithography. For example, the patterns of the first electrodes **110** may be striped lines, which keep predetermined distances from one another, in a PM-type organic light emitting display apparatus. In another example, the patterns of the first electrodes **110** may have forms corresponding to sub-pixels in an AM-type organic light emitting display apparatus.

The first electrodes **110** may be reflective electrodes or transmissive electrodes. If the first electrodes **110** are reflective electrodes, a reflective layer may be formed of, e.g., one or more of Ag, Mg, Al, Pt, Pd, Au, Ni, Nd, Ir, Cr, Li, Ca, or a compound thereof, and an additional layer having a high work function, e.g., one or more of ITO, IZO, ZnO, and In₂O₃, may be deposited on the reflective layer of the first electrodes **110**. If the first electrodes **110** are transmissive electrodes, the first electrodes **110** may be formed of a material having a high work function, e.g., one or more of ITO, IZO, ZnO, In₂O₃, etc.

Referring to FIG. 1B, a pixel defining layer (PDL) **120** may be formed on the first electrodes **110**. The PDL **120** may

include openings **120a** through which the first electrodes **110** are exposed. The PDL **120** may be formed of an insulating material.

FIG. 1C illustrates a top view as seen from direction "X" of FIG. 1B. As illustrated in FIG. 1C, the PDL **120** may have a predetermined pattern on the substrate **101**, so the openings **120a** may expose upper surfaces of the first electrodes **110**. For example, the PDL **120** may be shaped as a grid, so the openings **120a** may have rectangular shapes arranged in a matrix pattern. However, example embodiments are not limited thereto, and the openings **120a** may have any suitable shapes, e.g., polygonal or curved shapes.

Referring to FIG. 1D, a charge transport layer **131** may be formed on the substrate **101**, e.g., on the PDL **120** and the first electrodes **110** exposed through the PDL **120**. That is, the charge transport layer **131** may be formed, e.g., conformally, on a whole surface of the PDL **120** and areas of the first electrodes **110** exposed through the openings **120a**, i.e., the charge transport layer **131** may be formed without an additional patterning process.

The charge transport layer **131** may include a hole transfer layer (HTL) and/or a hole injection layer (HIL). The charge transport layer **131** may include only one of the HTL and the HIL or both of the HTL and the HIL. If the charge transport layer **131** includes both of the HTL and the HIL, the HIL may be disposed closer to the first electrodes **110** than the HTL.

Referring to FIG. 1E, a surface of the charge transport layer **131** may be made hydrophobic using a hydrophobic conversion processing unit **150**. For example, the hydrophobic conversion processing unit **150** may be positioned to process an entire upper surface **131a** of the charge transport layer **131**, i.e., a surface facing away from the substrate **101**, so the entire upper surface **131a** of the charge transport layer **131** may be made hydrophobic.

In detail, the hydrophobic conversion processing unit **150** may be a plasma apparatus or an ultraviolet lamp. The hydrophobic conversion processing unit **150** may employ a reaction gas, e.g., a fluoride-based reaction gas. For example, the hydrophobic conversion processing unit **150** may employ CF₄ as the reaction gas. When the hydrophobic conversion processing unit **150** generates plasma or ultraviolet rays under an atmosphere of CF₄, CF₄ decomposes to generate fluoride ions, which in turn, adsorb onto the upper surface **131a** of the charge transport layer **131**. When the upper surface **131a** of the charge transport layer **131** is combined with the adsorbed fluoride ions, surface energy of the upper surface **131a** of the charge transport layer **131** is reduced to become a hydrophobic surface.

Referring to FIG. 1F, predetermined areas of the upper surface **131a** of the charge transport layer **131** may be made hydrophilic. In detail, portions of the hydrophobic upper surface **131a** of the charge transport layer **131** may be selectively treated to become hydrophilic. In further detail, a mask may be used, so portions of the upper surface **131a** of the charge transport layer **131** corresponding to, e.g., overlapping, the openings **120a** of the PDL **120** may be made hydrophilic.

That is, a mask **170** may be disposed above the charge transport layer **131**, and an ultraviolet lamp **160** may be disposed above the mask **170** to radiate ultraviolet rays through the mask **170** onto the predetermined areas of the upper surface **131a** of the charge transport layer **131**. The mask **170** may have transmissive areas **171**, i.e., areas which transmit the ultraviolet rays generated by the ultraviolet lamp **160** toward the charge transport layer **131**, and non-transmissive areas **172**, i.e., areas of the mask **170** which do not transmit the ultraviolet rays. The mask **170** may be positioned such that the transmissive areas **171** may respectively correspond

to, e.g., overlap, top of the openings **120a**, and the non-transmissive areas **172** may correspond to, e.g., overlap, the PDL **120**. For example, each transmissive area **171** of the mask **170** may overlap an entire corresponding opening **120a**, such that portions of the charge transport layer **131** on the bottom and sidewalls of the opening **120a**, e.g., portions of the charge transport layer **131** inside the openings **120a**, may be irradiated with ultraviolet light, i.e., area I in FIG. 1F. Similarly, each non-transmissive area **172** of the mask **170** may overlap an entire upper surface **120b** of the PDL **120**, i.e., a surface parallel to and facing away from the substrate **101**, to block ultraviolet light radiation on portions of the charge transport layer **131** on the upper surface **120b** of the PDL **120**, i.e., area NI in FIG. 1F.

The ultraviolet rays generated by the ultraviolet lamp **160** transmit through the transmissive areas **171** and then reach the charge transport layer **131**. In other words, the ultraviolet rays reach the areas of the surface of the charge transport layer **131** corresponding to the openings **120a**, i.e., in areas I. The ultraviolet rays that reach the charge transport layer **131** separate the fluoride ions from the upper surface **131a** of the charge transport layer **131** in regions I.

The hydrophilic process may be performed in an ambience of air and/or a nitrogen gas. The ultraviolet rays generated by the ultraviolet lamp **160** ionize the air or the nitrogen gas, and the ions of the air and the nitrogen gas adsorb onto the upper surface **131a** of the charge transport layer **131** in areas I, i.e., inside the openings **120a**. Portions of the upper surface **131a** of the charge transport layer **131** onto which the ions of air or nitrogen are adsorbed exhibit increased surface energy and become a hydrophilic surface.

Therefore, areas of the upper surface **131a** of the charge transport layer **131** on bottom surfaces of the openings **120a** exposing the first electrodes **110** and side surfaces of the openings **120a** are made hydrophilic to have a hydrophilic characteristic. Areas of the upper surface **131a** of the charge transport layer **131** formed on the upper surface **120b** of the PDL **120** are made hydrophobic to have a hydrophobic characteristic. For example, referring to FIGS. 3 and 1F, inside surfaces of each opening **120a**, i.e., bottom and side surfaces, may be hydrophilic, while regions of the upper surface **120b** surrounding the openings **120a**, i.e., corresponding to the PDL **120** illustrated in FIG. 3, may be hydrophobic.

Referring to FIG. 1G, organic light emitting layers **132** may be formed on the charge transport layer **131** inside the openings **120a**. For example, the organic light emitting layers **132** may be formed using a nozzle printing method. The organic light emitting layers **132** may include organic light emitting layers which emit red (R), green (G), and blue (B) visible rays.

As described previously, areas of the upper surface **131a** of the charge transport layer **131** corresponding to the bottom and side surfaces of the openings **120a** are hydrophilic, while other areas of the upper surface **131a** of the charge transport layer **131** are made hydrophobic. Thus, the organic light emitting layers **132** may be formed on the charge transport layer **131** inside, e.g., only inside, the openings **120a**. In other words, if the organic light emitting layers **132** are hydrophilic and are deposited inside the openings **120a** that have hydrophilic surfaces, the organic light emitting layers **132** may be easily arranged only within the openings **120a** without spreading to the hydrophobic surfaces surrounding the openings **120a**. That is, the organic light emitting layers **132** may not spread to areas corresponding to the upper surface **120b** of the PDL **120** or beyond to adjacent openings **120a** due to repulsion between the hydrophilic organic light emitting layers **132** and the hydrophobic upper surface **120b**. As such, the

organic light emitting layers **132** may be easily formed and color mixing may be prevented, thereby improving a picture quality of the organic light emitting display apparatus.

In contrast, when organic light emitting layers are formed according to a conventional method, i.e., without providing hydrophobic/hydrophilic surfaces, organic light emitting layers of adjacent sub-pixels, e.g., organic light emitting layers of different colors, may mix with each other, thereby reducing color purity and picture quality of the display apparatus. In particular, when a nozzle printing method is used, i.e., formation of organic light emitting layers by depositing a solution via a nozzle, mixing of different layers in adjacent sub-pixels may occur, thereby limiting an improvement of a picture quality of an organic light emitting display apparatus.

If the organic light emitting layers **132** emit the R visible rays, the organic light emitting layers **132** may include a red light emitting material, e.g., Tetraphenylanthracene Rubrene, Ir(piq)₃, Ir(btp)₂(acac), Eu(dbm)₃(phen), Ru(dtb-bpy)₃*2(PF₆), DCM1, DCM2, Eu(TTA)₃, butyl-6-(1,1,7,7-tetramethyljulolidyl-9-enyl)-4H-pyran (DCJTb), or a polymer organic light emitting material, e.g., polyfluorene polymer, polyvinyl polymer, or the like. If the organic light emitting layers **132** emit the G visible rays, the organic light emitting layers **132** may include a green light emitting material, e.g., Coumarin 6, C545T, DMQA, Ir(ppy)₃, or a polymer organic light emitting material, e.g., polyfluorene polymer, polyvinyl polymer, or the like. If the organic light emitting layers **132** emit the B visible rays, the organic light emitting layers **132** may include a B light emitting material, e.g., oxadiazole dimer dyes (Bis-DAPDXP), Spiro compounds (Spiro-DPVBi, Spiro-6P), triarylamine compounds, bis(styryl)amine (DPVBi, DSA), BCzVBi, perylene, TPBe, BCzVB, DPAVBi, DPAVB, BDAVBi, FIrPic, or a polymer light emitting material, e.g., polyfluorene polymer, polyvinyl polymer, or the like.

Referring to FIG. 1H, a second electrode **140** may be formed on the organic light emitting layers **132** to complete the manufacture of an organic light emitting display apparatus **100**. Although not shown in FIG. 1H, an electron transfer layer (ETL) or an electron injection layer (EIL) may be further formed between the organic light emitting layers **132** and the second electrode **140**. The second electrode **140** may have a striped shape to be orthogonal to the patterns of the first electrodes **110** in the PM type organic light emitting display apparatus but may be formed throughout an active area in which an image is to be realized, in the AM type organic light emitting display apparatus.

The second electrode **140** may be a transmissive electrode or a reflective electrode. If the second electrode **140** is a transmissive electrode, a metal having a low work function, i.e., Ag, Mg, Al, Pt, Pd, Au, Ni, Nd, Ir, Cr, Li, Ca, or a compound of Ag, Mg, Al, Pt, Pd, Au, Ni, Nd, Ir, Cr, Li, and Ca, may be deposited, and an auxiliary electrode layer or a bus electrode line may be formed of a transparent conductive material, e.g., ITO, IZO, ZnO, and/or In₂O₃, on the metal in order to form the second electrode **140**. If the second electrode **140** is a reflective electrode, the second electrode **140** may be formed of a metal having a low work function, i.e., Ag, Mg, Al, Pt, Pd, Au, Ni, Nd, Ir, Cr, Li, Ca, or the like. In example embodiments, the first electrodes **110** may be anode electrodes, and the second electrode **140** may be a cathode electrode. Alternatively, the first electrodes **110** may be cathode electrodes, and the second electrode **140** may be an anode electrode.

Although not shown in FIG. 1H, a sealing member (not shown) may be disposed to face a surface of the substrate **101**. The sealing member may protect the organic light emitting

layers **132** from external moisture, oxygen, or the like, and may be formed of a transparent material. The sealing member may be formed of glass, plastic, or an overlap structure of a plurality of organic materials and inorganic materials to protect the organic light emitting layers **132**.

In the method of the example embodiments, the charge transport layer **131** may be formed on an entire surface of the substrate **101**, and the entire upper surface of the charge transport layer **131** may be made hydrophobic. Next, predetermined areas of the upper surface of the charge transport layer **131** on which the organic light emitting layers **132** are to be formed are made hydrophilic. Therefore, the organic light emitting layers **132** may be easily formed in the predetermined areas. In other words, the organic light emitting layers **132** may be prevented from being mixed into adjacent sub-pixels, thereby improving a picture quality of the organic light emitting display apparatus **100**.

Areas of the upper surface of the charge transport layer **131** that directly contact the organic light emitting layers **132** are processed, i.e., treated with ultraviolet lamp to form a hydrophilic surface, in order to effectively form the organic light emitting layers **132** in the areas. The first electrodes **110** are prevented from being damaged in the step of processing the upper surface of the charge transport layer **131**. As a result, a picture quality of the organic light emitting display apparatus **100** is improved.

FIGS. 2A through 2E illustrate cross-sectional views of stages in a method of manufacturing an organic light emitting display apparatus according to another embodiment. For convenience, description of same elements will not be repeated.

Referring to FIG. 2A, first electrodes **210**, a PDL **220**, and a charge transport layer **231** may be formed on a substrate **201**. In more detail, the first electrodes **210** may be formed on the substrate **201**, and the PDL **220** may be formed on the first electrodes **210**. The PDL **220** may have openings **220a** through which the first electrodes **210** are exposed.

The charge transport layer **231** may be formed. The charge transport layer **231** may be formed on a whole surface of the PDL **220** and areas of the first electrodes **210** exposed through the openings **220a**. In other words, the charge transport layer **231** may be formed without an additional patterning process. The charge transport layer **231** may include a HTL and/or a HIL.

Structures and materials of the substrate **201**, the first electrodes **210**, the PDL **220**, and the charge transport layer **231** are the same as those of respective substrate **101**, the first electrodes **110**, the PDL **110**, and the charge transport layer **131** of the previous embodiment described previously with reference to FIGS. 1A-1H. Thus, their detailed descriptions will not be repeated.

Referring to FIG. 2B, an upper surface of the charge transport layer **231** may be made hydrophobic using a hydrophobic conversion processing unit **250**. Here, the whole surface of the charge transport layer **231** may be made hydrophobic.

The hydrophobic conversion processing unit **250** may be a plasma apparatus or an ultraviolet lamp. The hydrophobic processing needs a reaction gas and thus uses a fluoride compound as the reaction gas. In more detail, CF_4 is used as the reaction gas. When the hydrophobic conversion processing unit **250** generates plasma or ultraviolet rays in an ambience of CF_4 , the reaction gas such as CF_4 is decomposed to generate fluoride ions, and the fluoride ions adsorb onto the surface of the charge transport layer **231**. The surface of the charge transport layer onto which the fluoride ions have adsorbed is combined with fluoride and thus has low surface energy and becomes a hydrophobic surface. It is noted that the hydrophobic conversion processing unit **250** is the same as

the hydrophobic conversion processing unit **150** described previously with reference to FIG. 1E.

Referring to FIG. 2C, predetermined areas of the upper surface of the charge transport layer **231** may be made hydrophilic. In more detail, areas of the surface of the charge transport layer **232** corresponding to the openings **220a** of the PDL **220** may be made hydrophilic.

The hydrophilic process may be performed using ultraviolet laser beams **260** without an additional mask. In other words, the ultraviolet laser beams **260** may be focused and radiated only onto the areas of the upper surface of the charge transport layer **231** corresponding to, e.g., overlapping, the openings **220a**, to perform the hydrophilic process. Here, if a single ultraviolet laser source is used, the single ultraviolet laser source may be scanned to respectively radiate the ultraviolet laser beams **260** into the openings **220a**. Example embodiments, however, are not limited thereto, e.g., a plurality of ultraviolet laser sources may be used to radiate the ultraviolet laser beams **260**. The ultraviolet laser beams **260** that reach the charge transport layer **231** separate combination of the surface of the charge transport layer **231** with the fluoride ions.

The hydrophilic process may be performed in an atmosphere of air or a nitrogen gas. The ultraviolet laser beams **260** ionize the air or the nitrogen gas, and the ions of the air or the nitrogen gas adsorb onto the upper surface of the charge transport layer **231**, i.e., in regions where the fluoride ions were separated from the upper surface. Therefore, the upper surface of the charge transport layer **231** onto which the air/nitrogen ions are adsorbed has increased surface energy and becomes a hydrophilic surface.

As a result, areas of the upper surface of the charge transport layer **231** corresponding to, e.g., overlapping, bottom surfaces of the openings **220a** exposing the first electrodes **210** and inside surfaces of the openings **220a** may be made hydrophilic to have a hydrophilic characteristic. Areas of the upper surface of the charge transport layer **231** corresponding to, e.g., overlapping, an upper surface of the PDL **220** may be made hydrophobic to have a hydrophobic characteristic.

Referring to FIG. 2D, organic light emitting layers **232** may be formed on the charge transport layer **231**. Here, the organic light emitting layers **232** may be formed using a nozzle printing method.

As described above, the areas of the surface of the charge transport layer **231** corresponding to the bottom and inside surfaces of the openings **220a** may be made hydrophilic, and the other areas of the surface of the charge transport layer **231** may be made hydrophobic, thereby respectively forming the organic light emitting layers **232** in the openings **220a**. In other words, the organic light emitting layers **232** may be respectively easily arranged in the opening **220a**, i.e., corresponding to sub-pixels, without going beyond the upper surface of the PDL **220** to adjacent openings **220a**. Accordingly, the organic light emitting layers **232** may be easily formed in desired patterns, thereby improving a picture quality of the organic light emitting display apparatus.

Referring to FIG. 2E, a second electrode **240** may be formed on the organic light emitting layers **232** in order to complete the manufacture of an organic light emitting display apparatus **200**. Although not shown in FIG. 2E, an ETL or an EIL may be further formed between the organic light emitting layers **232** and the second electrode **240**.

A sealing member (not shown) may be disposed to face a surface of the substrate **201**. The sealing member may protect the organic light emitting layers **232** from external moisture or oxygen and may be formed of a transparent material. The sealing member may be formed of glass, plastic, or an overlap

structure of a plurality of organic materials and inorganic materials to protect the organic light emitting layers 232.

As described above, in a method of manufacturing an organic light emitting display apparatus according to example embodiments, organic light emitting layers may be easily formed in desired sub-pixels without mixing with adjacent sub-pixels. Thus, a picture quality of the organic light emitting display may be improved.

Exemplary embodiments have been disclosed herein, and although specific terms are employed, they are used and are to be interpreted in a generic and descriptive sense only and not for purpose of limitation. Accordingly, it will be understood by those of ordinary skill in the art that various changes in form and details may be made without departing from the spirit and scope of the present invention as set forth in the following claims.

What is claimed is:

1. A method of manufacturing an organic light emitting display apparatus, comprising:

forming first electrodes on a substrate;
forming a pixel defining layer (PDL) on the substrate and first electrodes, the PDL including openings exposing predetermined areas of the first electrodes;

forming a charge transport layer on the entire PDL and inside the openings of the PDL;

performing a hydrophobic process on the charge transport layer;

performing a hydrophilic process on the charge transport layer;

wherein the hydrophobic process is performed before the hydrophilic process; and wherein the hydrophobic process is performed on an entire upper surface of the charge transport layer; and the hydrophilic process is performed only on portions of the charge transport layer corresponding to the openings such that said portions of the charge transport layer corresponding to the openings are made hydrophilic;

forming organic light emitting layers on the charge transport layer; and

forming a second electrode electrically connected to the organic light emitting layers.

2. The method as claimed in claim 1, wherein the organic light emitting layers are formed inside the openings.

3. The method as claimed in claim 1, wherein the charge transport layer includes at least one of a hole transfer layer and a hole injection layer.

4. The method as claimed in claim 1, wherein performing the hydrophobic process includes using plasma or ultraviolet light under an atmosphere of a fluoride-based gas.

5. The method as claimed in claim 4, wherein the fluoride-based gas is CF_4 .

6. The method as claimed in claim 1, wherein performing the hydrophilic process includes irradiating ultraviolet light onto regions of the charge transport layer corresponding to the openings.

7. The method as claimed in claim 6, wherein performing the hydrophilic process further comprises use of the ultraviolet light under an atmosphere of air or a nitrogen gas.

8. The method as claimed in claim 7, wherein performing the hydrophilic process further comprises:

providing a mask having transmissive areas respectively corresponding to the openings; and
irradiating the ultraviolet light through the mask using an ultraviolet lamp.

9. The method as claimed in claim 7, wherein irradiating ultraviolet light onto regions of the charge transport layer corresponding to the openings includes using an ultraviolet laser.

10. The method as claimed in claim 9, wherein the hydrophilic process is performed by scanning ultraviolet laser beams focused to sizes corresponding to the openings.

11. The method as claimed in claim 1, wherein performing the hydrophilic process includes making portions of the charge transport layer on bottom and side surfaces of the openings hydrophilic.

12. The method as claimed in claim 1, wherein performing the hydrophilic process includes making only an upper surface of the charge transport layer inside the openings of the PDL hydrophilic.

13. The method as claimed in claim 12, wherein, after the hydrophilic process, a hydrophobic portion of the charge transport layer is defined on an upper surface of the PDL around the openings.

14. The method as claimed in claim 13, wherein a portion of a hydrophilic charge transport layer inside each opening is completely surrounded by a portion of a hydrophobic charge transport layer.

15. The method as claimed in claim 1, wherein the organic light emitting layers are formed using a nozzle printing method.

16. An organic light emitting display apparatus manufactured by the method of claim 1.

* * * * *

专利名称(译)	制造有机发光显示装置的方法和有机发光显示装置		
公开(公告)号	US8383453	公开(公告)日	2013-02-26
申请号	US12/926586	申请日	2010-11-29
[标]申请(专利权)人(译)	金元YONG		
申请(专利权)人(译)	金元YONG		
当前申请(专利权)人(译)	三星DISPLAY CO. , LTD.		
[标]发明人	KIM WON YONG		
发明人	KIM, WON-YONG		
IPC分类号	H01L51/40		
CPC分类号	H01L27/3283 H01L51/0004 H01L51/5048 H01L51/56		
优先权	1020090117087 2009-11-30 KR		
其他公开文献	US20110127502A1		
外部链接	Espacenet	USPTO	

摘要(译)

一种制造有机发光显示装置的方法，包括在基板上形成第一电极，在基板和第一电极上形成像素限定层（PDL），PDL包括暴露第一电极的预定区域的开口，形成电荷传输层在PDL上和PDL的开口内，在电荷传输层上执行疏水处理，在电荷传输层上执行亲水处理，使得对应于开口的电荷传输层的部分被制成亲水的，形成有机光在电荷输送层上发射层，并形成电连接到有机发光层的第二电极。

